

MODEL

- ❑ FLF500 is a non-refrigerated, stainless steel drinking fountain ideal for installation in parks and recreation areas.

STANDARD FEATURES

- Waterways Are Lead-Free In Materials & Construction
- Dial-A-Drink® Bubbler
- Cabinet Base Completely Conceals Plumbing Lines
- Satin Finish Stainless Steel Surfaces
- Limited 1-Year Warranty

INSTALLATION

- Shipped with complete instructions.

COLOR

- ❑ Standard Finish: Stainless Steel

NET WEIGHT: ??

Limited 1-Year Warranty (Continental limits of the United States and Canada): One year from date of installation on parts only. Detailed warranty certificate enclosed with each drinking fountain; sample copy available upon request.

Components in this drinking fountain are lead free as defined by the Safe Drinking Water Act Amendments of 1986, and the Lead Contamination Control Act of 1988.



Model covered by these specifications complies with all known Plumbing Codes. Certified by Canadian Standards Association.

Export Warranty: One year on component parts. Detailed warranty certificate enclosed with each drinking fountain, sample copy available upon request.

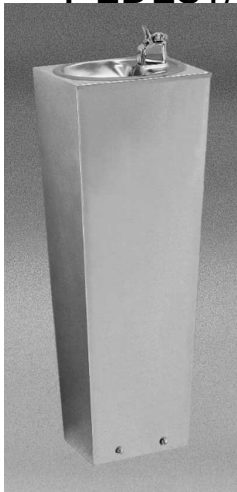

Specifications are subject to change without notice.

Copyright 1999 OASIS Corporation

Oasis® and Dial-A-Drink® are registered trademarks of OASIS Corporation.

DRINKING FOUNTAINS

PEDESTAL DRINKING FOUNTAIN



Model FLF500 Shown

Distribuidor:

Novo Agua SA de CV

Tel: (0181)8129-5307

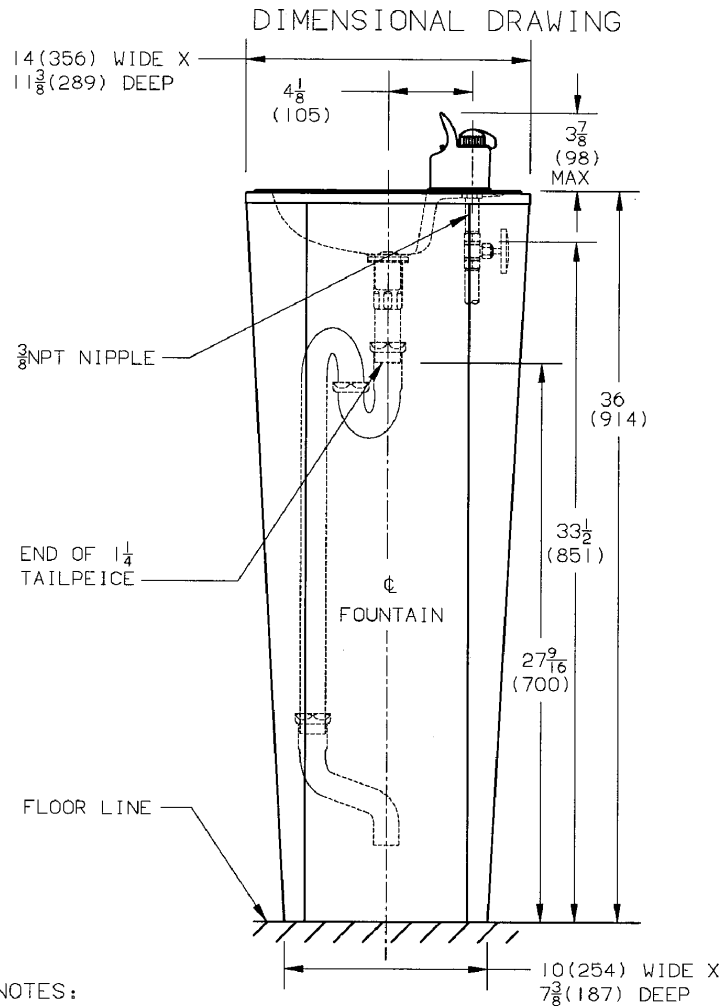
Tel y fax: 8311-8352

OASIS Corporation

265 North Hamilton Road ♦ PO Box 13150
Columbus, Ohio 43213-0150 U.S.A.

Oasis® is a registered trademark of OASIS Corporation
 Specifications are subject to change without notice
 Copyright 1999 OASIS Corporation

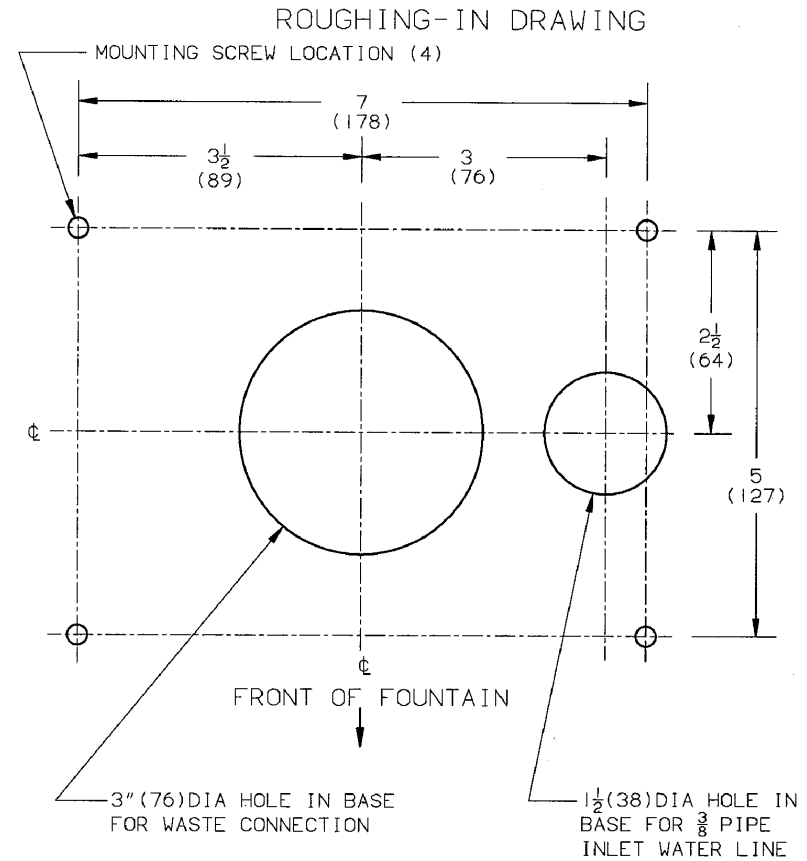
OASIS Corporation
 265 North Hamilton Road • PO Box 13150
 Columbus, Ohio 43213-0150 U.S.A.



NOTES:

TRAP, OFFSET, FIXTURE STOP VALVE, AND UNION NOT FURNISHED WITH DRINKING FOUNTAIN.

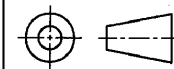
ALL DIMENSIONS ARE IN INCHES.
 DIMENSIONS IN PARENTHESES () ARE IN MILLIMETERS.



NOTES:

MOUNTING HOLES IN BASE ARE OVERSIZED TO PROVIDE AMPLE CLEARANCE FOR 1/4" (6) DIA FASTENERS. FLATWASHERS SHOULD BE USED TO PROVIDE MAXIMUM STRENGTH.

THIRD ANGLE PROJECTION



ROUGHING-IN AND DIMENSIONAL DRAWING

Model FLF500