

#### Model

- M110PM is a non-refrigerated drinking fountain. When the mechanical push-button is depressed, water continues to flow as long as the button is depressed.

#### Standard Features

- Waterways Are Lead-Free In Materials and Construction
- Stainless Steel Surfaces
- Flexible Bubbler Guard
- Heavy-Gauge Galvanized Steel Wall Mounting Frame
- Limited 1-Year Warranty

#### Installation

- Prior to roughing-in, consult with local, state, and federal codes for proper mounting height.
- Shipped with complete instructions and wall mounting frame.

#### Colors

- Standard Finish: Stainless Steel
- Optional finish at extra cost: Regency Bronze

**Net Weight:** Approximately 20 Lbs.

**Limited 1-Year Warranty** (Continental limits of the United States and Canada): One year from date of installation on parts only. Detailed warranty certificate enclosed with each drinking fountain; sample copy available upon request.

Components in this fountain are lead free as defined by the Safe Drinking Water Act Amendments of 1986, and the Lead Contamination Control Act of 1988.



Model covered by this specification complies with all known Plumbing Codes. Certified by Canadian Standards Association.



# OASIS

## DRINKING FOUNTAIN MODULAR



This non-refrigerated drinking fountain will complement just about any interior design.

**Model M110PM Shown**

**Export Warranty:** One-year on component parts. Detailed warrant certificate enclosed with each drinking fountain; sample copy available upon request.

Specifications are subject to change without notice.

Copyright 1999 OASIS Corporation

Oasis® is a registered trademark of OASIS Corporation.

**DISTRIBUIDOR:**  
NOVO AGUA SA DE CV  
8311-8352, 8129-5307

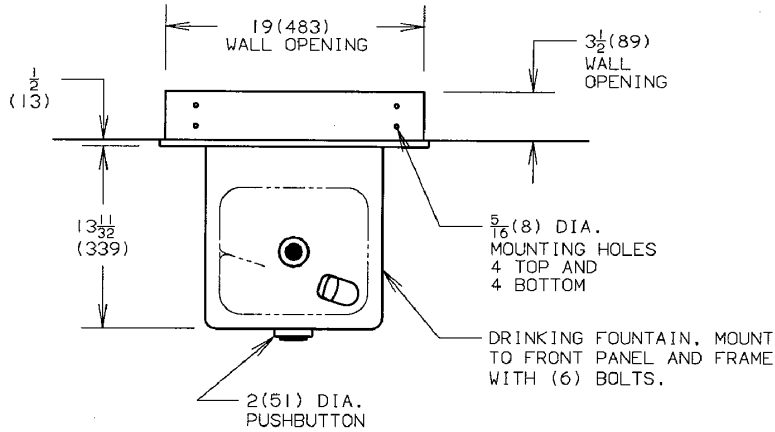
**OASIS Corporation**  
265 North Hamilton Road ♦ PO Box 13150  
Columbus, Ohio 43213-0150 U.S.A.

---

# OASIS Corporation

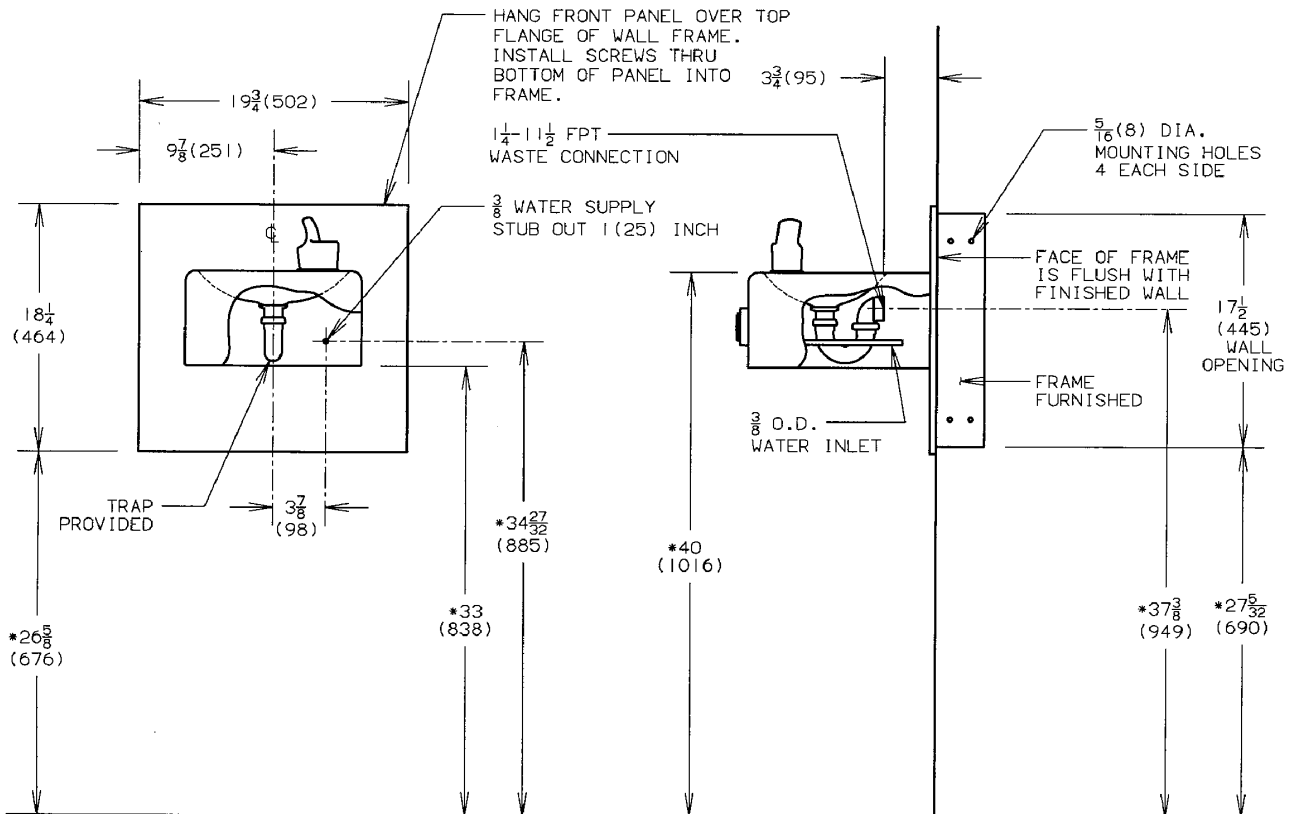
265 North Hamilton Road • PO Box 13150  
Columbus, Ohio U.S.A.

Oasis® is a registered trademark of OASIS Corporation  
Specifications are subject to change without notice  
Copyright 1999 OASIS Corporation



**NOTES:**

1. STOP VALVE NOT FURNISHED.
- \*2. RECOMMENDED ADULT HEIGHT INSTALLATION SHOWN. ADJUST VERTICAL DIMENSIONS AS REQ'D TO COMPLY WITH FEDERAL, STATE, AND LOCAL CODES.
3. ALL DIMENSIONS ARE IN INCHES. DIMENSIONS IN PARENTHESES ( ) ARE IN MILLIMETERS.



THIRD ANGLE PROJECTION	ROUGHING-IN AND DIMENSIONAL DRAWING

**Model M110PM**