



OASIS Water Coolers

Distribuidor:
 Novo Agua SA de CV
 Tel: (0181)8129-5307
 Tel y fax: 8311-8352

BARRIER-FREE VERSACOOLER®

P8AM, PAM

Suggested Specification

Model P8AM shall deliver 8.0 gph of 50° F water at 90° F ambient and 80° F inlet water. Model PAM is a non-refrigerated drinking fountain and delivers ambient water. Models P8AM and PAM shall include front and side push pads to activate the flow of water. Basin shall be designed to eliminate splashing and standing water. Bubbler shall have flexible guard and operate between 20 and 120 psi. Cabinet finish shall be Sandstone or Greystone **powder coated** paint on galvanized steel or brushed stainless steel. Cooling system shall use R-134a refrigerant. Shall comply with ANSI A117.1 and ADA. Shall be listed by Underwriters Laboratories, certified to the Air Conditioning and Refrigeration Institute Standard 1010, certified by Canadian Standard Institute and conform to European Union Directives. Shall comply with ANSI/NSF 61.

Models

P8AM Delivers 8.0 gallons of chilled drinking water per hour.

PAM A non-refrigerated fountain

These models satisfies CABO/ANSI A117.1 and when properly installed, they allow your facility to comply with ADA requirements.

Standard Features

- Built-in 100 micron strainer stops particles before they enter the waterway
- Waterways Are Lead-Free In Materials & Construction
- Stainless Steel Top
- Flexible Bubbler Guard
- Heavy Duty Galvanized Steel Frame
- High Efficiency Cooling Tank and Coil
- Refrigerant R-134a
- Three Push Pad Activation

Finishes

- Standard Cabinet Finish: Sandstone **powder coated** paint on galvanized steel
- Optional finishes at no additional cost: Greystone **powder coated** paint on galvanized steel
- Optional finishes at additional cost: Stainless Steel, Regency Bronze, and optional **powder coated** finishes



Options (at additional cost)

- Stainless steel bubbler
- Trim bezel (031364) to conceal wall surface discoloration
- Glass Fillers (Factory Installed)
- Push Handle (029604-004)
- Push Back (029603-005)
- Push Down (029603-006)

Installation

- Prior to roughing consult with local, state, and federal codes for proper mounting height.
- Shipped with complete instructions and wall mounting bracket.
- Removable side and front panels provide easy access for installation.



ADA Compliant



Components in these water coolers are lead free as defined by the Safe Drinking Water Act Amendments of 1986, and the Lead Contamination Control Act of 1988.

Limited 5-Year Warranty (Continental limits of the United States and Canada only): Five years on the sealed refrigeration system and most component parts. Detailed warranty certificate enclosed with each water cooler; sample available upon request.

Export Warranty: One year on the sealed refrigeration system and most component parts. Four-year replacement contract on sealed refrigeration system. Detailed warranty certificate enclosed with each water cooler; sample copy available upon request.

Models covered by these specifications comply with all known Plumbing Codes. Listed by Underwriters' Laboratories. Certified by Canadian Standards Association, and Certified to Air Conditioning and Refrigeration Institute Standard 1010.



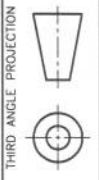
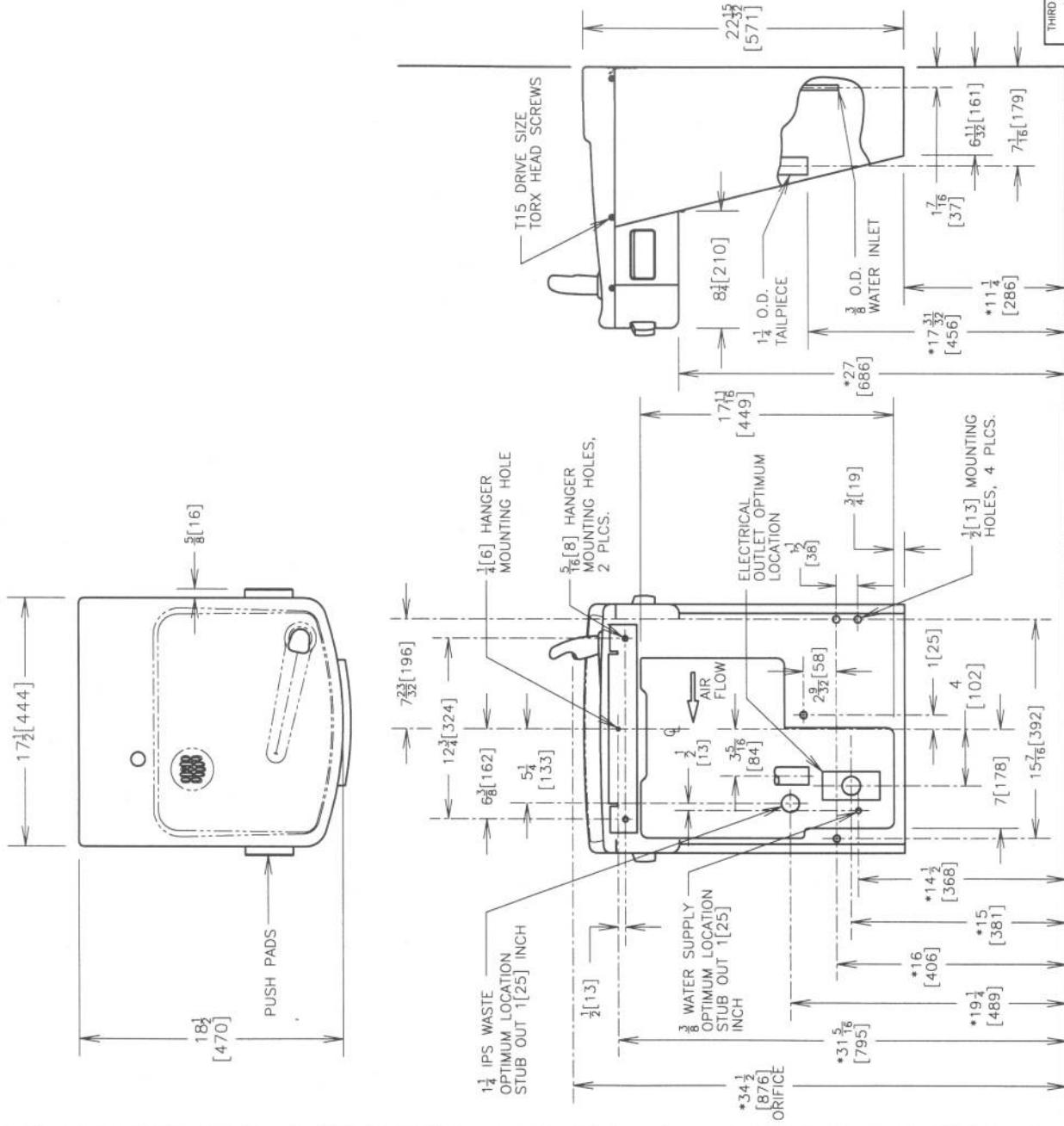
Model	50° F Drinking Water 90° F Ambient Air Temp*				115 Volts, 60 HZ			Glass Filler Acc. Option	Cabinet Color Option	Net Wt. Approx.
	Rated Capacity GPH	Base Rate GPH	Pre-Cooler	Hot'N Cold™ Model	Compr. HP	Full Load Amps	Rated Watts			
P8AM**	8.0	8.0	No	No	1/4	4.8	380	Yes	Yes	59 Lbs.
PAM	Fountain Only							Yes	Yes	25 Lbs.

*Air Conditioning and Refrigeration Institute Standard Rating Condition 80° F inlet water temperature.

**Special export models available, operable on 220-240 volts, 50/60 Hz. UL, CSA and ARI certification not applicable.

VERSACOOLER® MODELS P8AM, PAM

- NOTES:
- TRAP, STOP VALVE AND ELECTRICAL OUTLET NOT FURNISHED.
 - ALLOW 4 INCHES [102 MM] MIN. PER SIDE FOR VENTILATION.
 - RECOMMENDED ADULT HEIGHT INSTALLATION SHOWN. ADJUST VERTICAL DIMENSIONS AS REQ'D TO COMPLY WITH FEDERAL, STATE, AND LOCAL CODES.
 - ALL DIMENSIONS ARE IN INCHES. DIMENSIONS IN BRACKETS [] ARE IN MILLIMETERS.



ROUGHING-IN
AND
DIMENSIONAL DRAWING